

True Manager Manual config

■목차

1. IP Discovery (장비 검색)
2. IP Change (IP 변경)
3. IP Discovery를 통한 장비 추가
4. Add Device (장비 추가)
5. Add Multiple Devices (다수의 장비 추가)
6. FirmWare Upgrade (펌웨어 업그레이드)
7. Config Backup (설정 백업)
8. Config Restore (설정 백업 파일 불러오기)

1. IP Discovery (장비검색)

IP discovery

☐ Select all

Mac Search

IP address	Mac address	Base port	Http port	IP mode	Model	Firmware	Mac collision
<input type="checkbox"/> 127.0.0.1	30:FB:1E:03:00:00	2222	80	Fixed IP	RESPTTEST		
<input type="checkbox"/> 192.168.141.143	00:1C:63:AA:09:D4	2222	80	Fixed IP	TN-B230N17	V10.006S02_T100	
<input type="checkbox"/> 192.168.142.111	00:1C:63:C2:FA:A5	2222	80	Fixed IP	TN-B22034R	V5.912R02_T100	
<input type="checkbox"/> 192.168.142.123	00:1C:63:C6:01:8B	4500	5500	Fixed IP	TN-D35032R	V5.912R02_T100	
<input type="checkbox"/> 192.168.142.202	00:1C:63:C2:B6:66	4400	5400	Fixed IP	TN-B3212K2R	V5.912R02_T100	
<input type="checkbox"/> 192.168.142.231	00:1C:63:C5:34:B1	4600	80	Fixed IP	TN-P6236N15	V9.001R01_T100	
<input type="checkbox"/> 192.168.143.103	00:1C:63:C6:08:D2	2222	80	Fixed IP	TN-B22034R	V5.007B01_T100	
<input type="checkbox"/> 192.168.143.151	00:1C:63:C5:32:64	2222	80	Fixed IP	DTS-P5236L	V9.002B12_T100	
<input type="checkbox"/> 192.168.143.20	00:1C:63:B3:67:E0	2222	80	Fixed IP	TCS-3000	V3.904B02_T100	
<input type="checkbox"/> 192.168.152.100	00:1C:63:CC:00:2B	2222	80	Fixed IP	TN-P5N240N16R	V11.006W08_T...	
<input type="checkbox"/> 192.168.152.101	00:1C:63:CC:00:92	2222	80	Fixed IP	TN-P5N340N16R	V11.006W08_T...	
<input type="checkbox"/> 192.168.152.102	00:1C:63:CC:00:A3	2222	80	Fixed IP	TN-P5N640N16R	V11.006W08_T...	
<input type="checkbox"/> 192.168.152.103	00:1C:63:CC:00:22	2222	80	Fixed IP	TN-P5N840N16R	V11.006W08_T...	
<input type="checkbox"/> 192.168.152.117	00:1C:63:B3:04:BA	2222	80	Fixed IP	TCS-3000	V3.005B01_T100	
<input type="checkbox"/> 192.168.152.156	00:1C:63:B3:67:E7	2222	80	Fixed IP	ANT-35000A1	V3.002B02_T913	
<input type="checkbox"/> 192.168.152.171	00:1C:63:C5:1C:82	2222	80	Fixed IP	TN-B244N15	V9.906R01_T100	
<input type="checkbox"/> 192.168.152.172	00:1C:63:C5:1C:6E	2222	80	Fixed IP	TN-B244N15	V9.906R01_T100	
<input type="checkbox"/> 192.168.152.173	00:1C:63:C5:1C:7F	2222	80	Fixed IP	TN-B244N15	V9.906R01_T100	
<input type="checkbox"/> 192.168.152.20	00:1C:63:CC:01:64	2222	80	Fixed IP	TN-B340N16	V11.006W07_T...	
<input type="checkbox"/> 192.168.152.201	00:1C:63:AA:09:23	2222	80	Fixed IP	TCS-8500	V11.003S05_T100	
<input type="checkbox"/> 192.168.152.202	00:1C:63:BF:00:8A	2222	80	Fixed IP	TCS-8500	V11.003S05_T100	
<input type="checkbox"/> 192.168.152.21	00:1C:63:CC:01:67	2222	80	Fixed IP	TN-B240N16	V11.006W07_T...	
<input type="checkbox"/> 192.168.152.218	00:1C:63:AA:09:96	2222	80	Fixed IP	TN-B3218K5R	V10.002Q01_T...	
<input type="checkbox"/> 192.168.152.22	00:1C:63:CC:01:65	2222	80	Fixed IP	TN-B840N16	V11.006W08_T...	
<input type="checkbox"/> 192.168.152.247	00:1C:63:AA:09:D1	2222	80	Fixed IP	TN-P7230N17R	V10.004B19_T100	
<input type="checkbox"/> 192.168.152.25	00:1C:63:CC:01:8C	2222	80	Fixed IP	TN-B244N16	V11.006W07_T...	
<input type="checkbox"/> 192.168.152.31	00:1C:63:AA:09:D5	2222	80	Fixed IP	TN-B230N17	V10.006S01_T100	
<input type="checkbox"/> 192.168.154.101	00:1C:63:CC:01:A7	2222	80	Fixed IP	TN-P5N340N16R	V11.005B16_T100	
<input type="checkbox"/> 192.168.154.124	00:1C:63:4C:04:2C	4300	5300	Fixed IP	TN-P6236W12	V5.912R02_T100	
<input type="checkbox"/> 192.168.154.154	00:1C:63:CC:00:72	2222	80	Fixed IP	TN-P5N240N16R	V11.006W07_T...	
<input type="checkbox"/> 192.168.154.199	00:1C:63:B2:38:EC	2222	80	Fixed IP	TN-B20XCE	V3.907R01_T100	
<input type="checkbox"/> 192.168.154.241	00:1C:63:C8:3A:89	2222	80	Fixed IP	TCAM-4322HBR	V5.912R02_T100	

Time out : 39 device(s) found

Filter

Mode

None

IP address

☐ Mask

192 . 168 . 10 . 0

☐ Range

From

192 . 168 . 10 . 1

To

192 . 168 . 10 . 255

Mac address

☐ Mask

00:1C:63:*:*:*

☐ Range

From

00:1C:63:00:00:00

To

00:1C:63:FF:FF:FF

Option

Sorting option

IP address

Handling duplicate mac address

☐ Notify Always

☒ Notify once

☐ Don't notify

Discovery

Add device

Ip change

Reset password

Close

-IP Discovery 기능을 이용하여 True Manager를 실행하는 PC와 Lan 상에 있는 트루엔 비디오 서버 및 IP 카메라 시스템들을 찾아서 등록하거나 IP 주소를 쉽게 변경 할 수 있습니다.

Server(서버) 메뉴에서 IP Discovery (장비검색) 버튼을 누르면 같은 LAN 상에 있는 트루엔 제품 들이 표시됩니다.

서브넷(Subnet)이 다른 IP 주소를 갖는 시스템들도 모두 표시됩니다.

2. IP Change (IP 변경)

IP discovery

☐ Select all Mac Search

IP address	Mac address	Base port	Http port	IP mode	Model	Firmware	Mac collisio ^
<input type="checkbox"/> 127.0.0.1	30:FB:33:03:00:00	2222	80	Fixed IP	RESPTTEST		
<input type="checkbox"/> 192.168.10.100	00:1C:63:C8:1D:CE	2222	80	Fixed IP	ENUP-20460RA	V5.005B08_T953	
<input type="checkbox"/> 192.168.141.143	00:1C:63:AA:09:D4	2222	80	Fixed IP	TN-B230N17	V10.006S02_T100	
<input type="checkbox"/> 192.168.142.111	00:1C:63:C2:FA:A5	2222	80	Fixed IP	TN-B22034R	V5.912R02_T100	
<input type="checkbox"/> 192.168.142.123	00:1C:63:C6:01:8B	4500	5500	Fixed IP	TN-D35032R	V5.912R02_T100	
<input type="checkbox"/> 192.168.142.202	00:1C:63:C2:B6:66	4400	5400	Fixed IP	TN-B3212K2R	V5.912R02_T100	
<input type="checkbox"/> 192.168.142.231	00:1C:63:C5:34:B1	4600	80	Fixed IP	TN-P6236N15	V9.001R01_T100	
<input checked="" type="checkbox"/> 192.168.143.103	00:1C:63:C6:08:D2	2222	80	Fixed IP	TN-B22034R	V5.007B01_T100	
<input type="checkbox"/> 192.168.143.151	00:1C:63:C5:32:64	2222	80	Fixed IP	DTS-P5236L	V9.002B12_T100	
<input type="checkbox"/> 192.168.143.20	00:1C:63:B3:67:E0	2222	80	Fixed IP	TCS-3000	V3.904B02_T100	
<input type="checkbox"/> 192.168.152.100	00:1C:63:CC:00:2B	2222	80	Fixed IP			
<input type="checkbox"/> 192.168.152.101	00:1C:63:CC:00:92	2222	80	Fixed IP			
<input type="checkbox"/> 192.168.152.102	00:1C:63:CC:00:A3	2222	80	Fixed IP			
<input type="checkbox"/> 192.168.152.103	00:1C:63:CC:00:22	2222	80	Fixed IP			
<input type="checkbox"/> 192.168.152.117	00:1C:63:B3:04:BA	2222	80	Fixed IP			
<input type="checkbox"/> 192.168.152.156	00:1C:63:B3:67:E7	2222	80	Fixed IP			
<input type="checkbox"/> 192.168.152.171	00:1C:63:C5:1C:82	2222	80	Fixed IP			
<input type="checkbox"/> 192.168.152.172	00:1C:63:C5:1C:6E	2222	80	Fixed IP			
<input type="checkbox"/> 192.168.152.173	00:1C:63:C5:1C:7F	2222	80	Fixed IP			
<input type="checkbox"/> 192.168.152.20	00:1C:63:CC:01:64	2222	80	Fixed IP			
<input type="checkbox"/> 192.168.152.201	00:1C:63:AA:09:23	2222	80	Fixed IP			
<input type="checkbox"/> 192.168.152.202	00:1C:63:BF:00:8A	2222	80	Fixed IP			
<input type="checkbox"/> 192.168.152.21	00:1C:63:CC:01:67	2222	80	Fixed IP			
<input type="checkbox"/> 192.168.152.218	00:1C:63:AA:09:96	2222	80	Fixed IP			
<input type="checkbox"/> 192.168.152.22	00:1C:63:CC:01:65	2222	80	Fixed IP			
<input type="checkbox"/> 192.168.152.247	00:1C:63:AA:09:D1	2222	80	Fixed IP			
<input type="checkbox"/> 192.168.152.25	00:1C:63:CC:01:8C	2222	80	Fixed IP			
<input type="checkbox"/> 192.168.152.31	00:1C:63:AA:09:D5	2222	80	Fixed IP			
<input type="checkbox"/> 192.168.154.101	00:1C:63:CC:01:A7	2222	80	Fixed IP			
<input type="checkbox"/> 192.168.154.124	00:1C:63:4C:04:2C	4300	53	Fixed IP			
<input type="checkbox"/> 192.168.154.154	00:1C:63:CC:00:72	2222	80	Fixed IP			
<input type="checkbox"/> 192.168.154.199	00:1C:63:B2:38:EC	2222	80	Fixed IP			

ip change

IP mode: Fixed IP

IP address: 192 . 168 . 143 . 103

Subnet mask: 255 . 255 . 192 . 0

Gateway: 192 . 168 . 128 . 1

Base port: 2222

Http port: 80

ID: admin

Password: ****

Change Close

Filter Mode: None

IP address Mask: 192 . 168 . 10 . 0

Range From: 192 . 168 . 10 . 1 To: 192 . 168 . 10 . 255

Mac address Mask: 00:1C:63:*:*:*

Range From: 00:1C:63:00:00:00 To: 00:1C:63:FF:FF:FF

Option Sorting option: IP address

Handling duplicate mac address: ☐ Notify Always ☒ Notify once ☐ Don't notify

Discovery Add device Ip change Reset password Close

Time out: 40 device(s) found

-IP Change (IP변경)을 통해 IP를 변경 할 수 있습니다.

-IP Mode : Fixed IP(고정IP) / DHCP (유동 IP)

-IP address : IP 입력

-SubnetMask : SubnetMask 입력

-GateWay : GateWay 입력

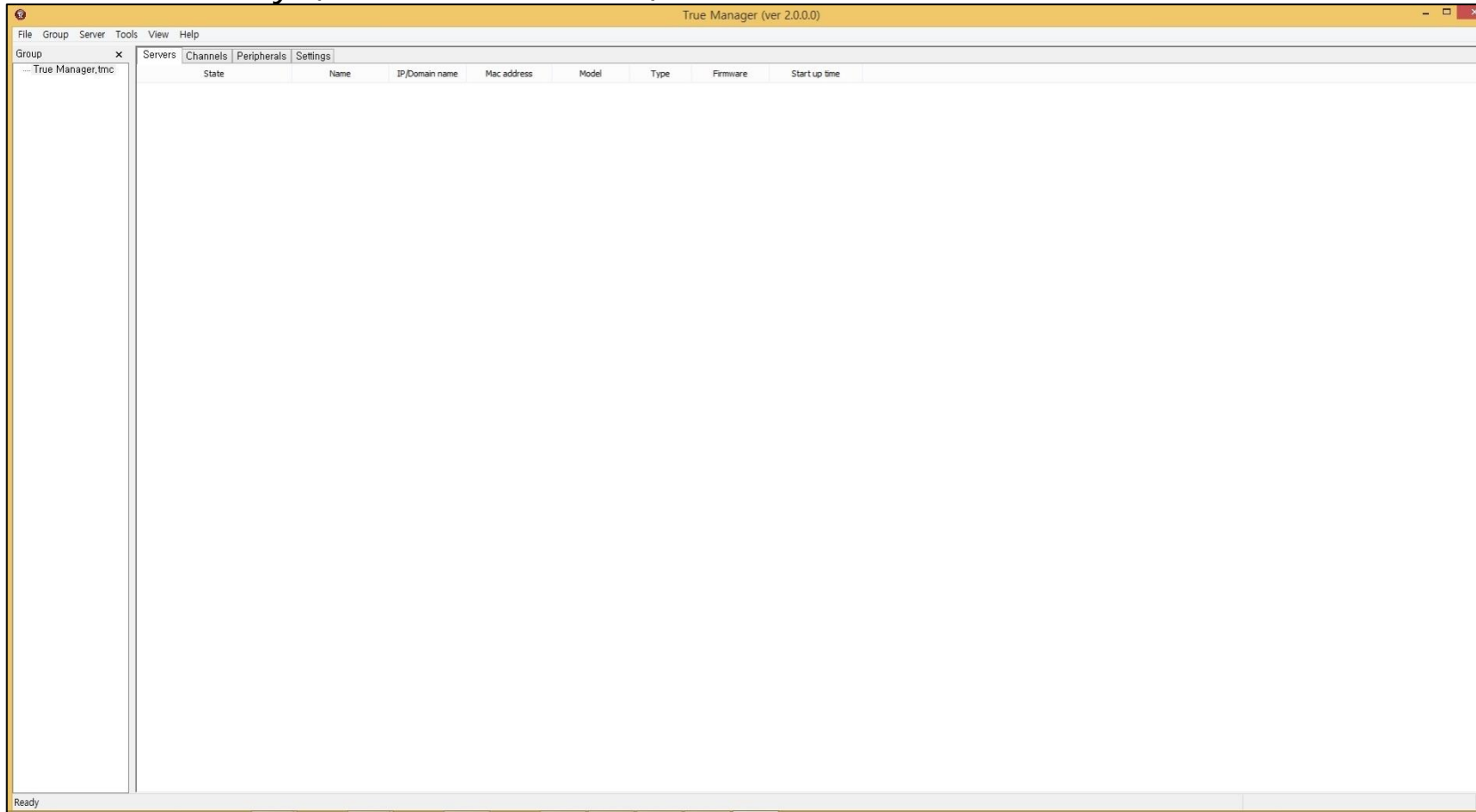
-BasePort : 카메라의 Base(기본) Port 입력

-HttpPort : 카메라의 Http(웹) Port 입력

-ID : 카메라의 ID 입력

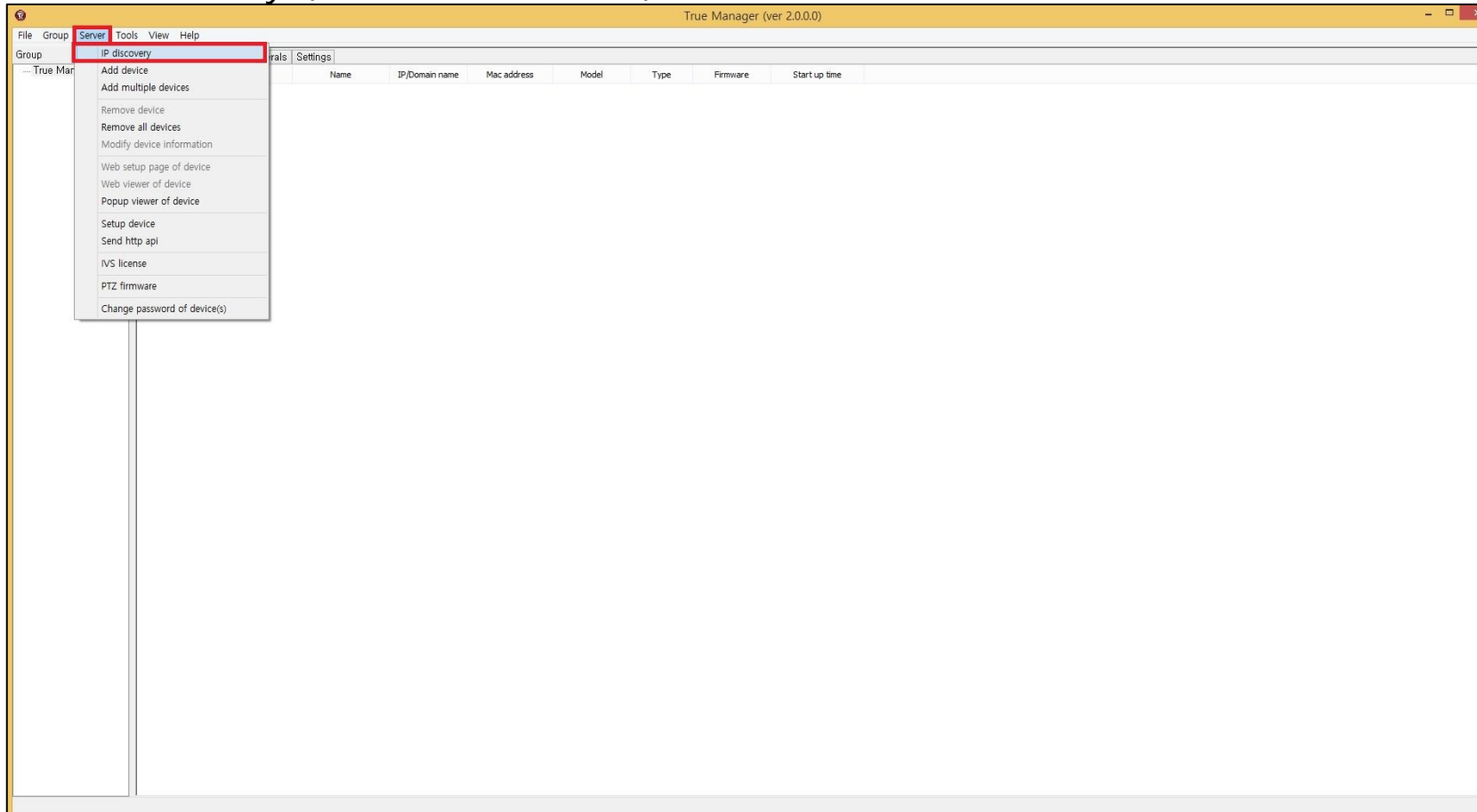
-PW : 카메라의 PW 입력

3. IP Discovey (장비검색 후 등록)



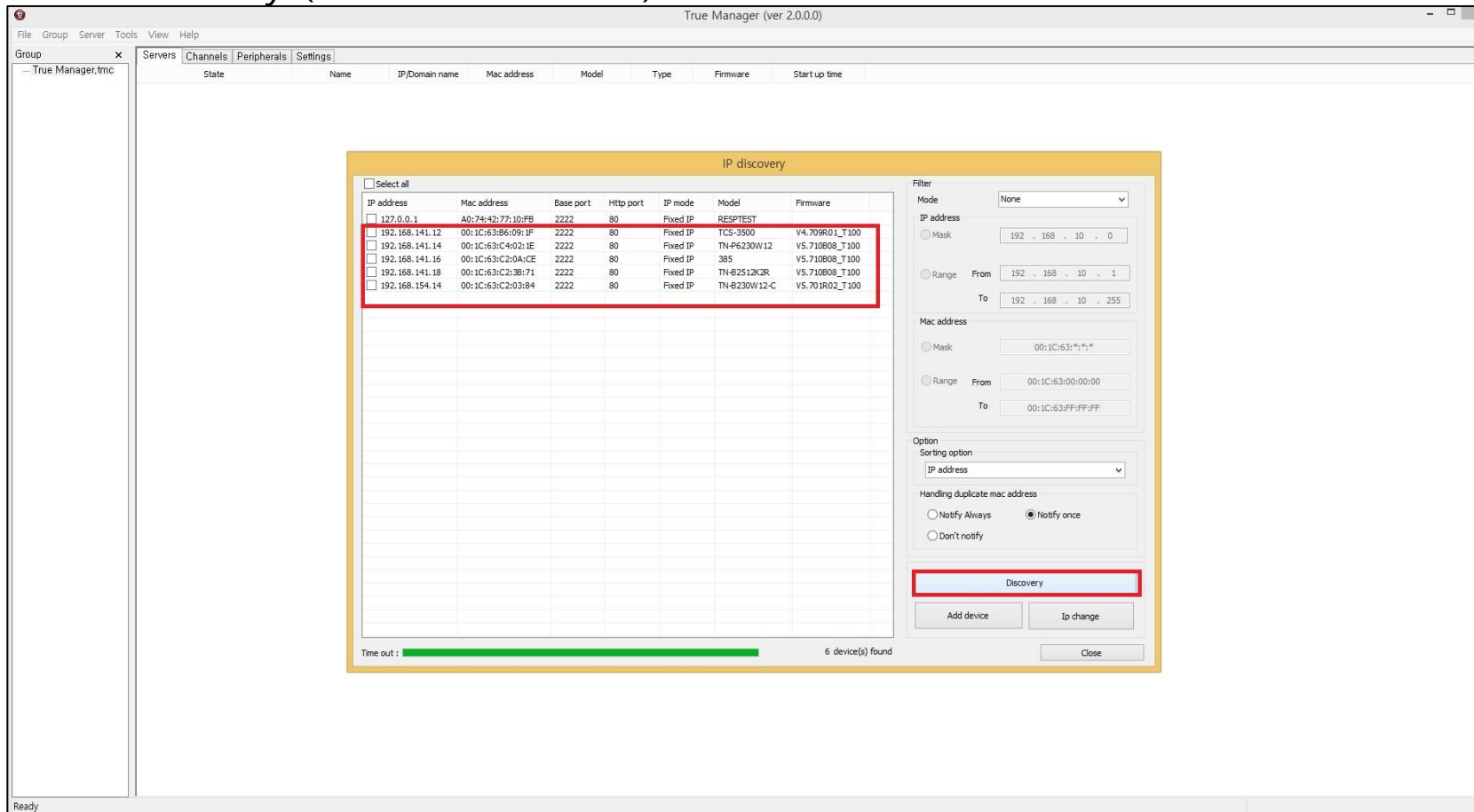
3-1. TrueManager를 실행합니다.

3. IP Discovery (장비검색 후 등록)



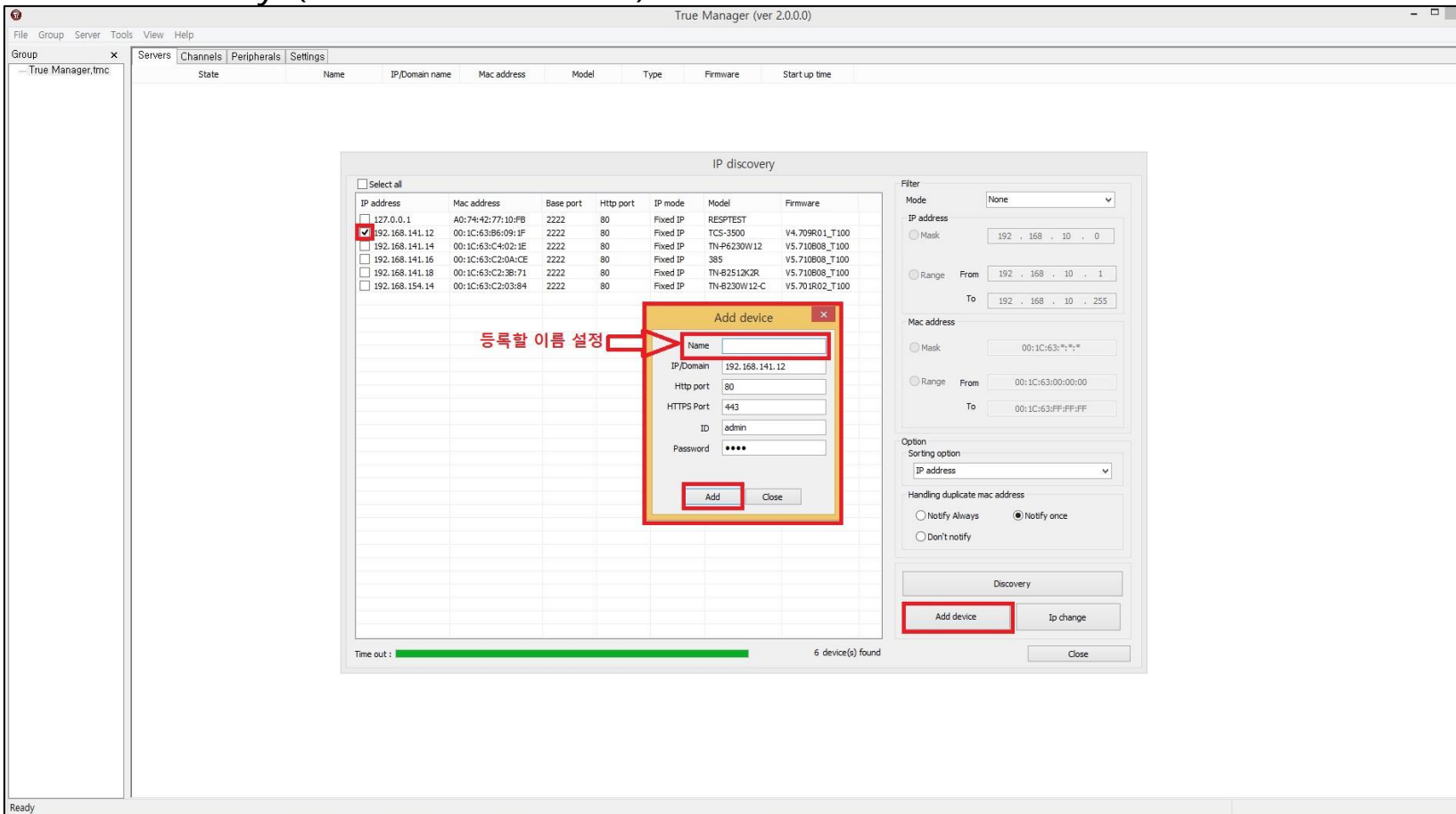
3-2. Sever ➔ IP discovery 를 클릭합니다.

3. IP Discovery (장비검색 후 등록)



3-3. 오른쪽 하단의 Discovery 버튼을 누르면 사진과 같이 같은 네트워크 망에 연결된 트루엔 카메라가 왼쪽에 표시됩니다.

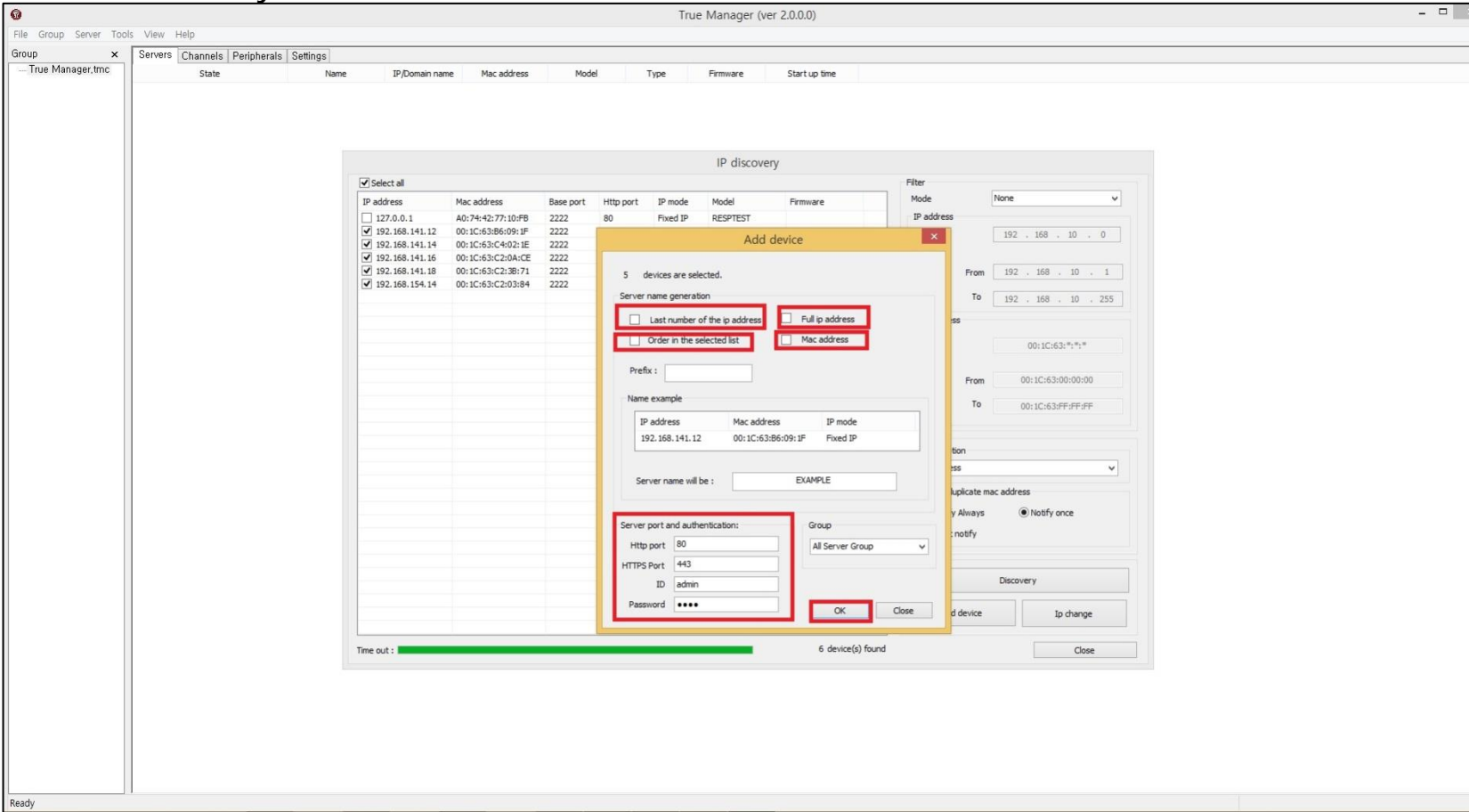
3. IP Discovery (장비검색 후 등록)



3-4. 왼쪽의 IP adress 옆의 체크박스에 1EA만 체크 후 오른쪽 하단의 Add Device를 누를 경우 위 사진과 같이 등록창이 뜹니다.

-Name 칸에 등록할 임의의 이름 및 각각의 Port와 ID, PassWord를 입력 후 Add 버튼을 누릅니다.

3. IP Discovery (장비검색 후 등록)

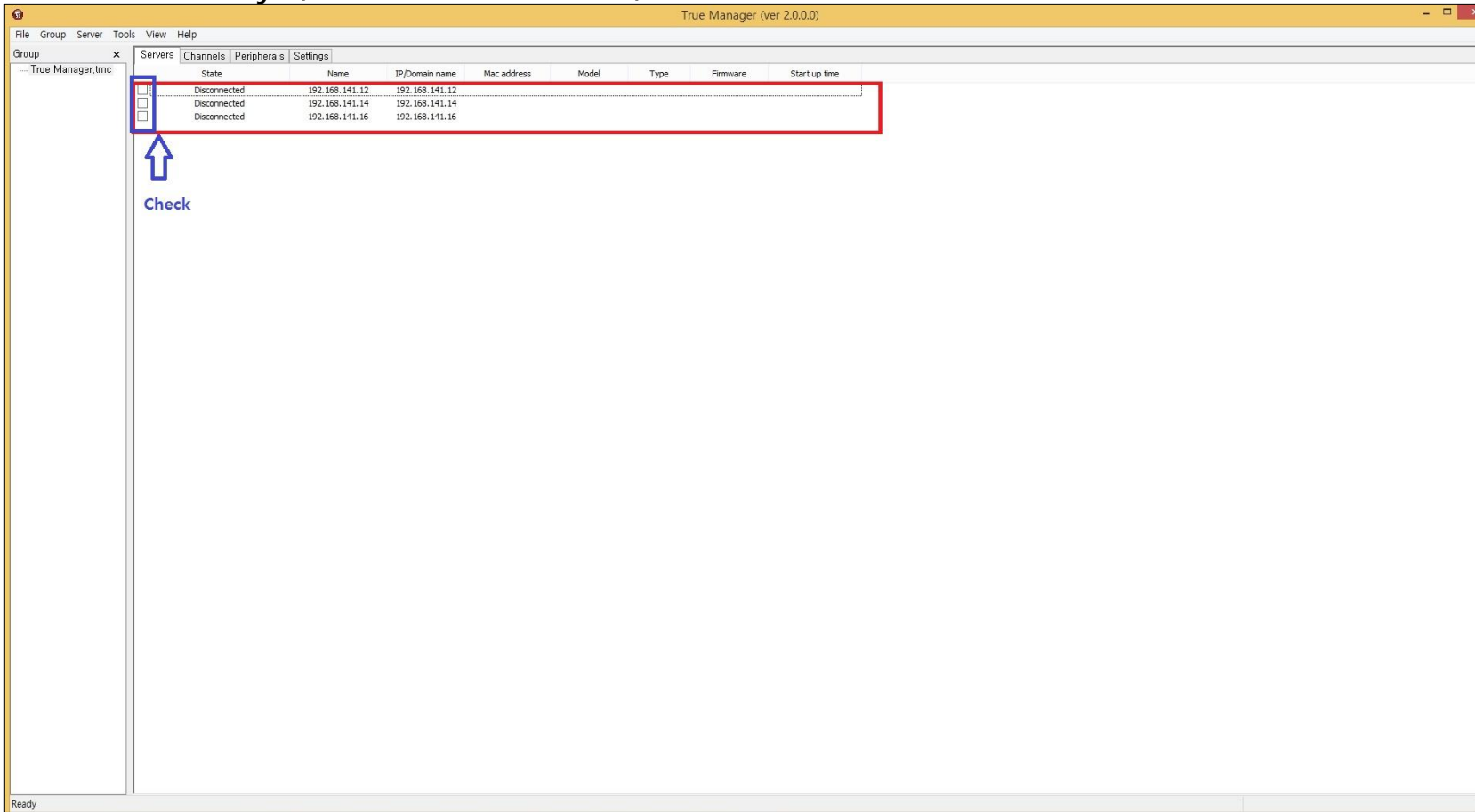


3-5. IP address 옆의 체크박스에 여러대의 카메라를 체크 후 오른쪽 하단의 Add Device를 눌렀을 경우 위 사진과 같이 등록창이 뜹니다.

-Server Name generation 하단에 보이는 4가지 항목 중 한가지를 선택하여 등록할 방법을 선택합니다.

-선택 후 하단의 Port 및 ID, Password를 입력 후 OK를 누릅니다.

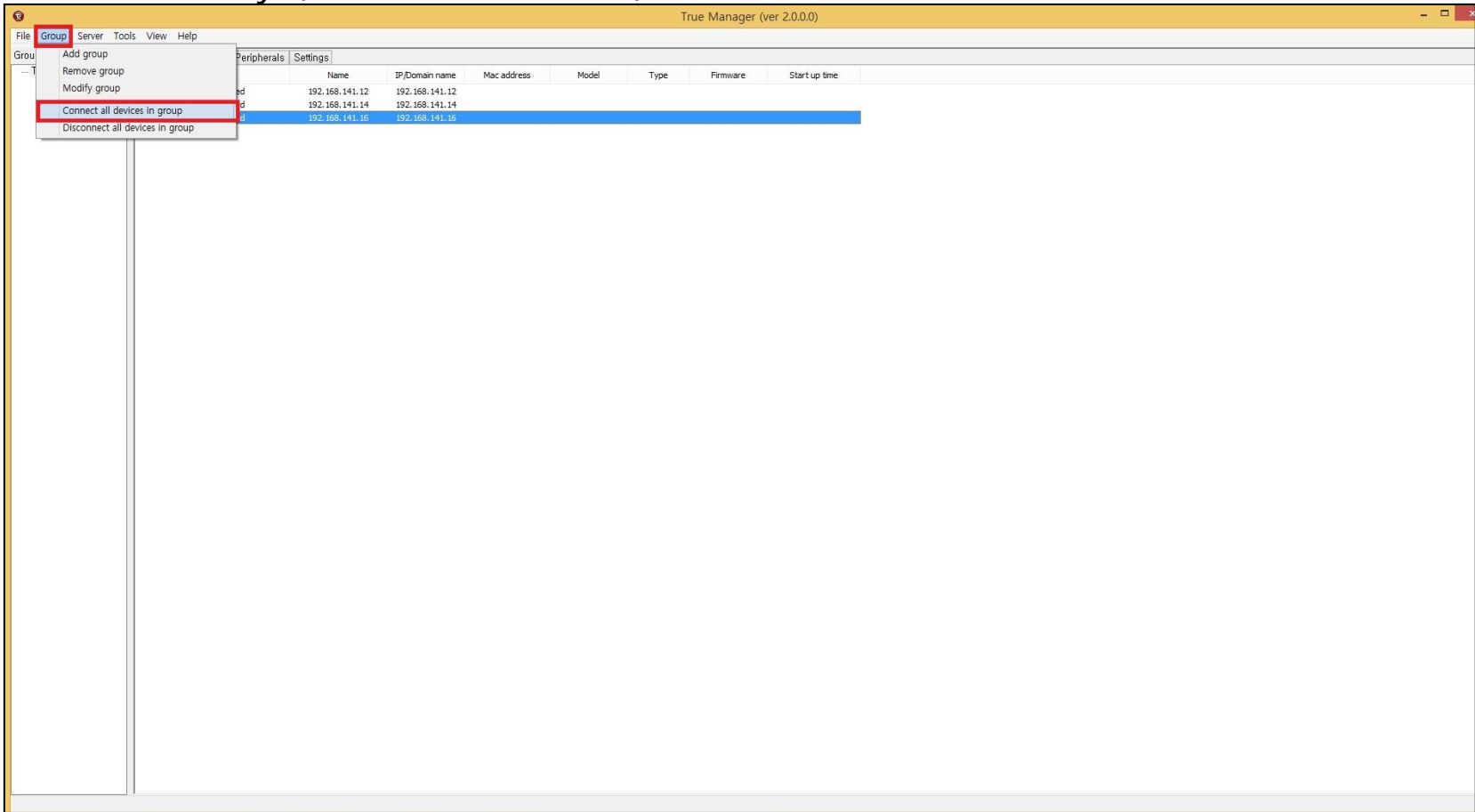
3. IP Discovery (장비검색 후 등록)



3-6. 위 과정을 수행하면 위 사진과 같이 등록됩니다.

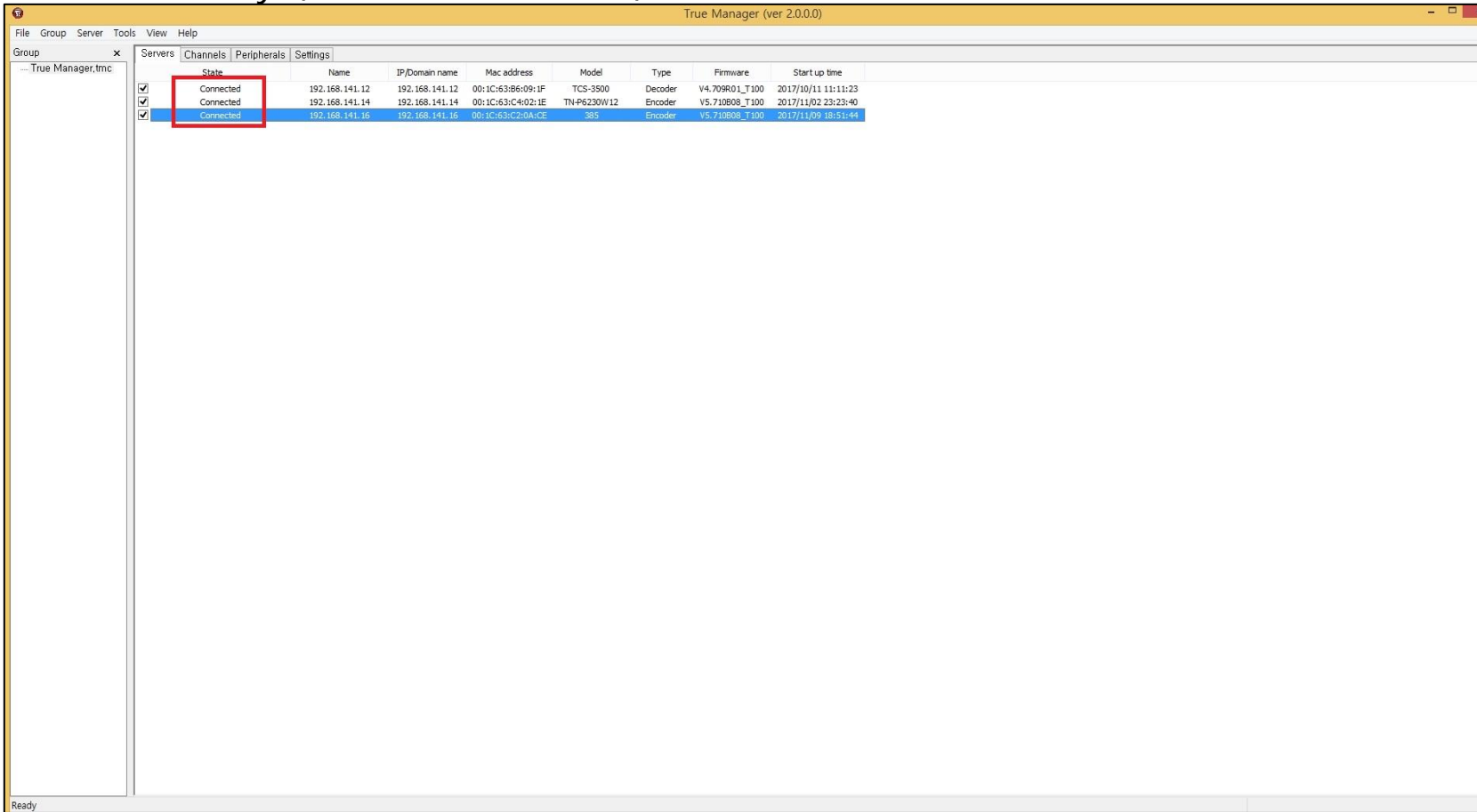
위 사진의 Blue Box 부분의 체크박스에 마우스로 클릭하여 체크합니다.

3. IP Discovey (장비검색 후 등록)



3-7. 카메라가 여러대일 경우 Group ➔ Connect all devices in Group을 통해 모든 카메라를 연결할 수 있습니다.

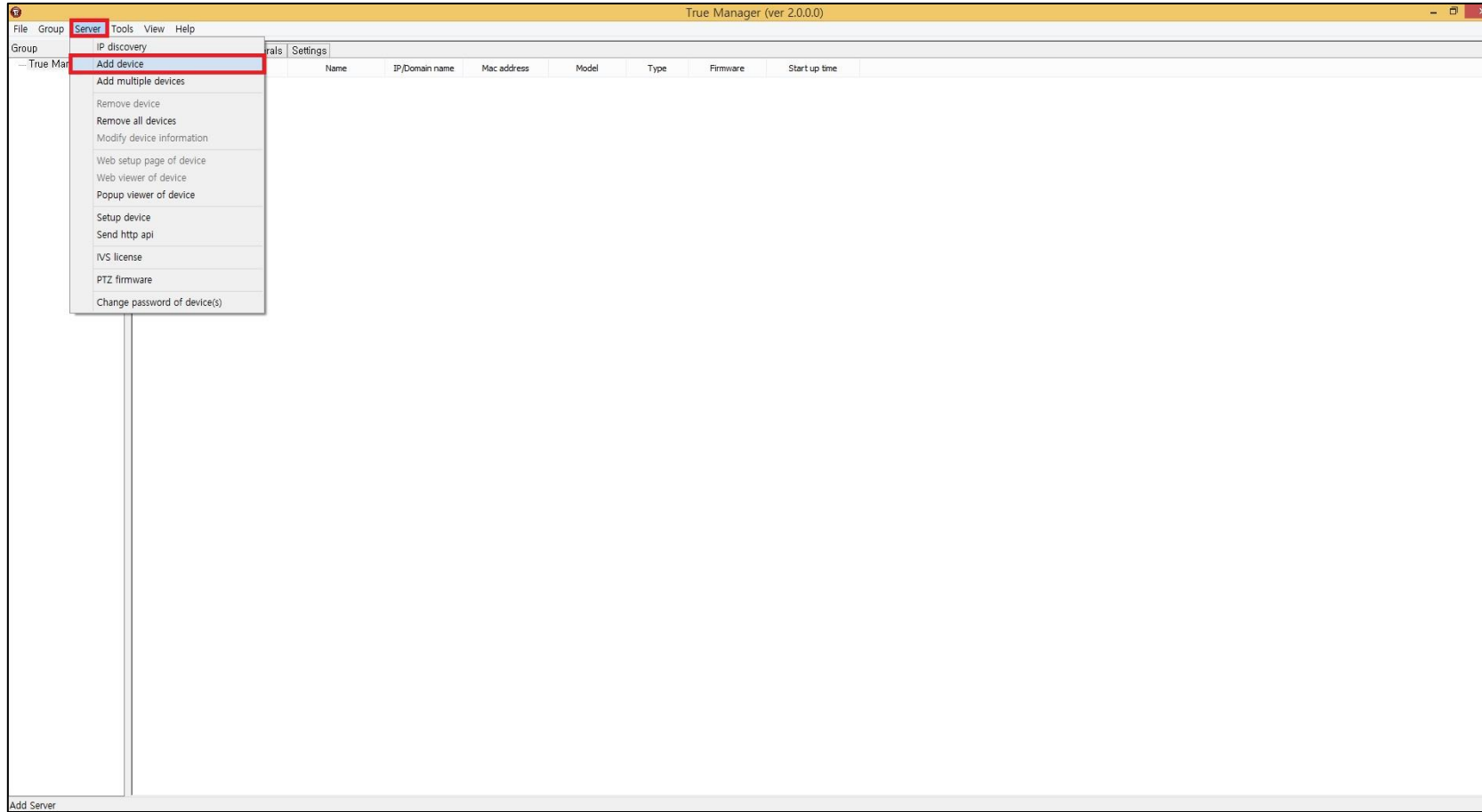
3. IP Discovery (장비검색 후 등록)



True Manager (ver 2.0.0.0)									
File Group Server Tools View Help									
Servers Channels Peripherals Settings									
	State	Name	IP/Domain name	Mac address	Model	Type	Firmware	Start up time	
<input checked="" type="checkbox"/>	Connected	192.168.141.12	192.168.141.12	00:1C:63:B6:09:1F	TCS-3500	Decoder	V4.709R01_T100	2017/10/11 11:11:23	
<input checked="" type="checkbox"/>	Connected	192.168.141.14	192.168.141.14	00:1C:63:C4:02:1E	TN-P6230W12	Encoder	V5.710808_T100	2017/11/02 23:23:40	
<input checked="" type="checkbox"/>	Connected	192.168.141.16	192.168.141.16	00:1C:63:C2:0A:CE	365	Encoder	V5.710808_T100	2017/11/09 18:51:44	

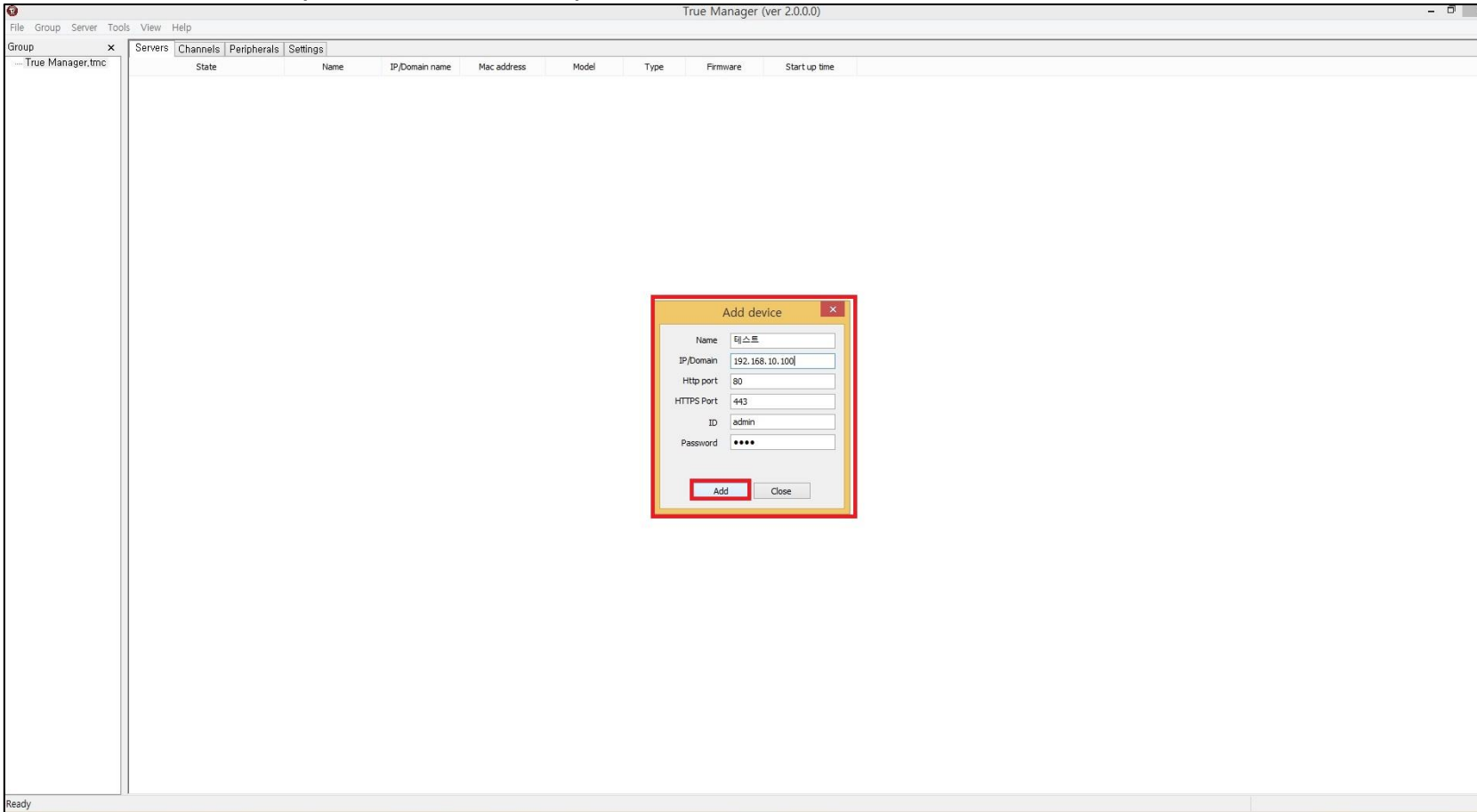
3-8. 체크박스에 체크 후 State에 Connected가 나왔는지 확인합니다.

4. Add Device (1대 수동 등록)



4-1. Sever ➔ Add device

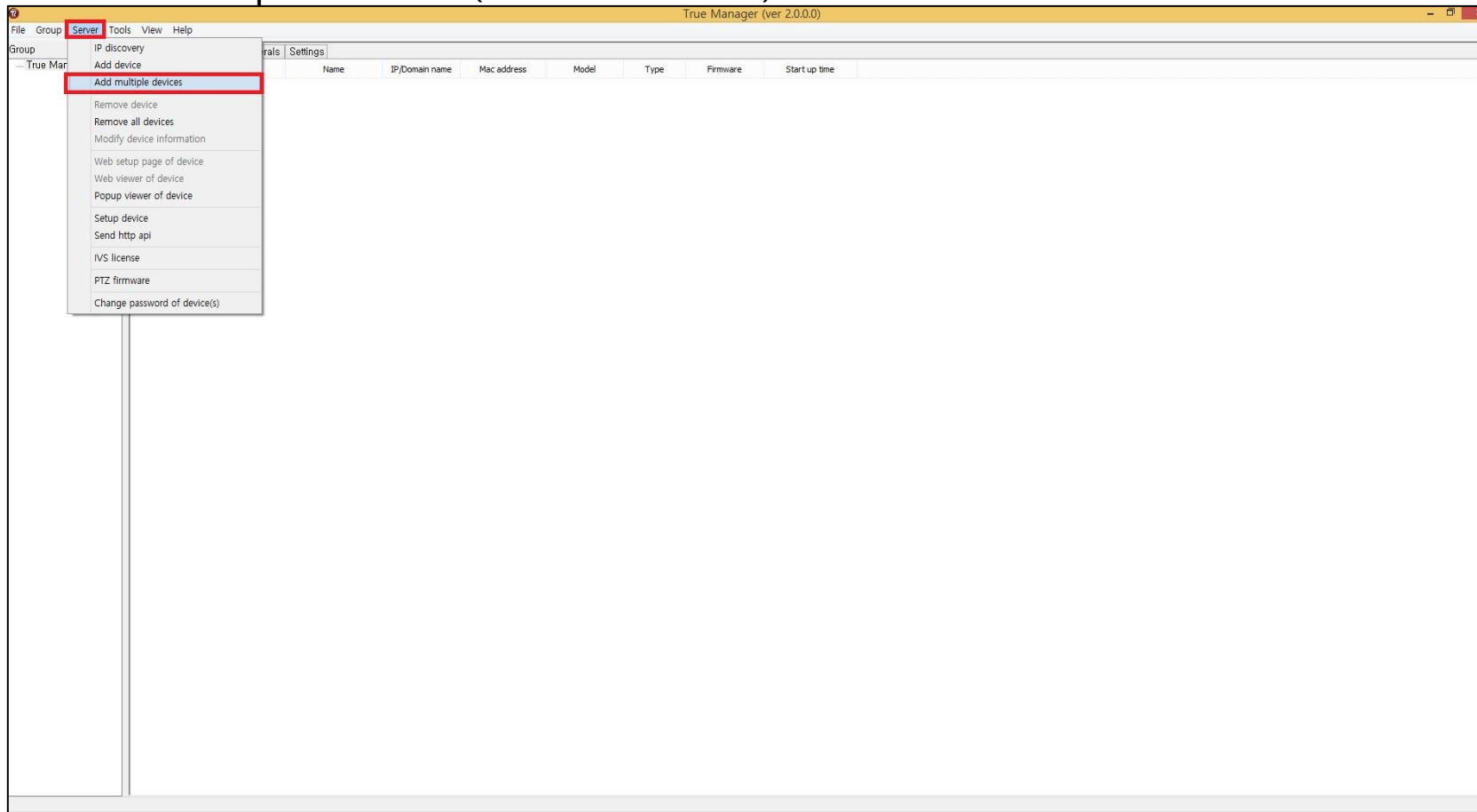
4. Add Device (1대 수동 등록)



4-2.

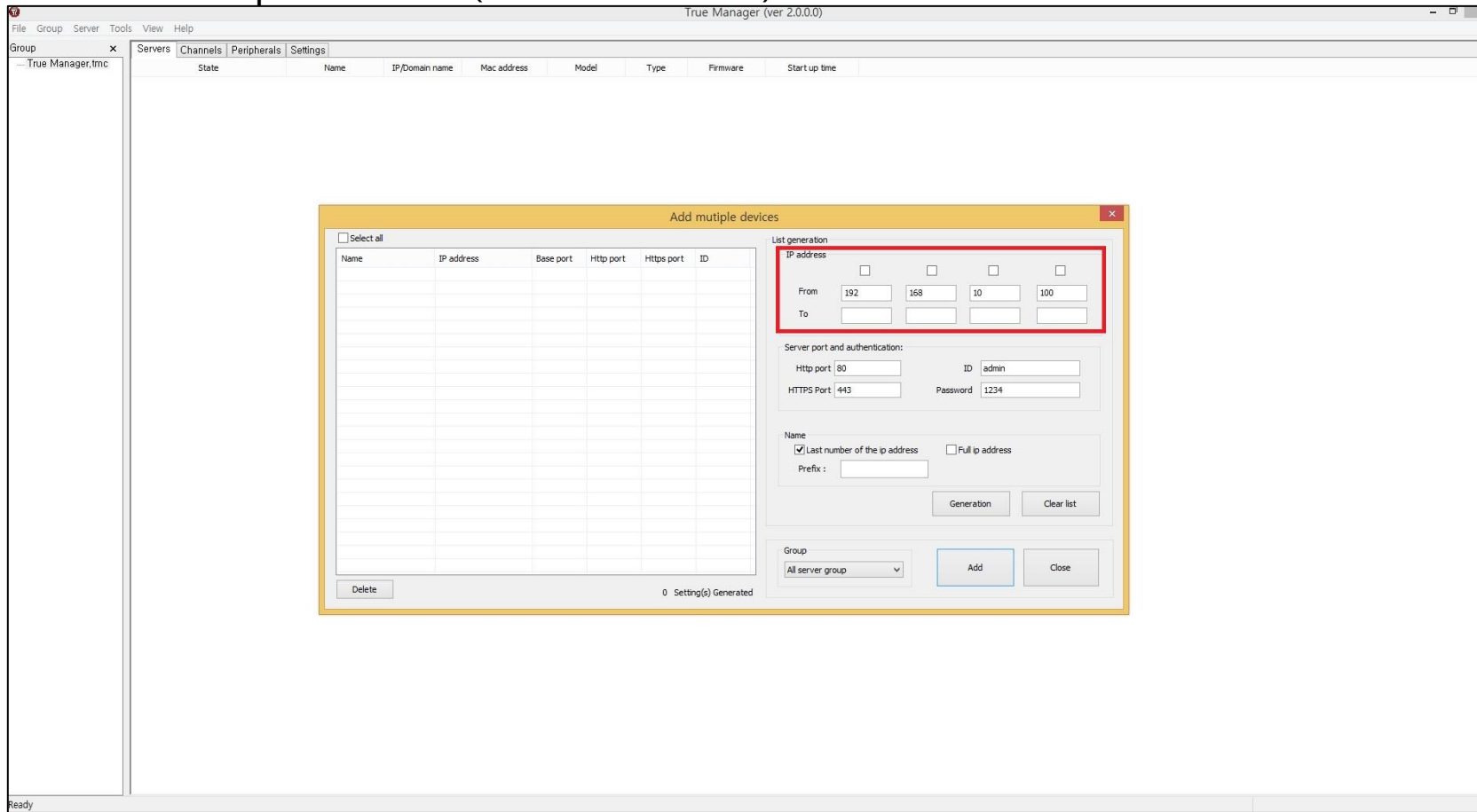
- Name : 등록할 임의의 이름 설정
- IP/Domain : 카메라의 IP 주소

5. Add Multiple Device (다수의 IP 등록)



5-1. Sever ➔ Add multiple devices

5. Add Multiple Device (다수의 IP 등록)



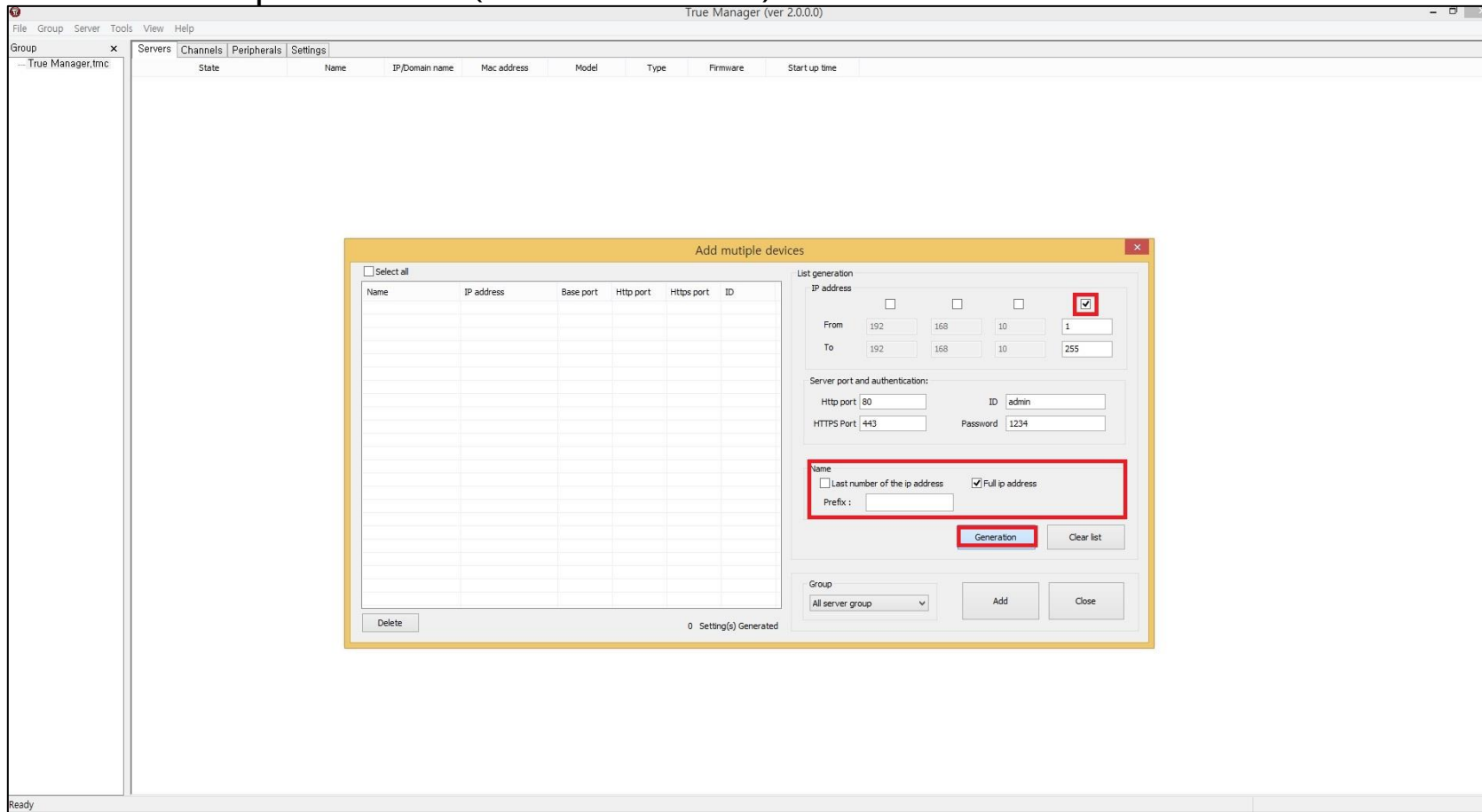
5-2. Add multiple devices 를 실행하면 다음과 같은 창이 뜹니다.

-From에 카메라의 시작 IP주소를 입력합니다.

(ex. 192.168.10.1 ~ 192.168.10.100 까지 사용중일경우

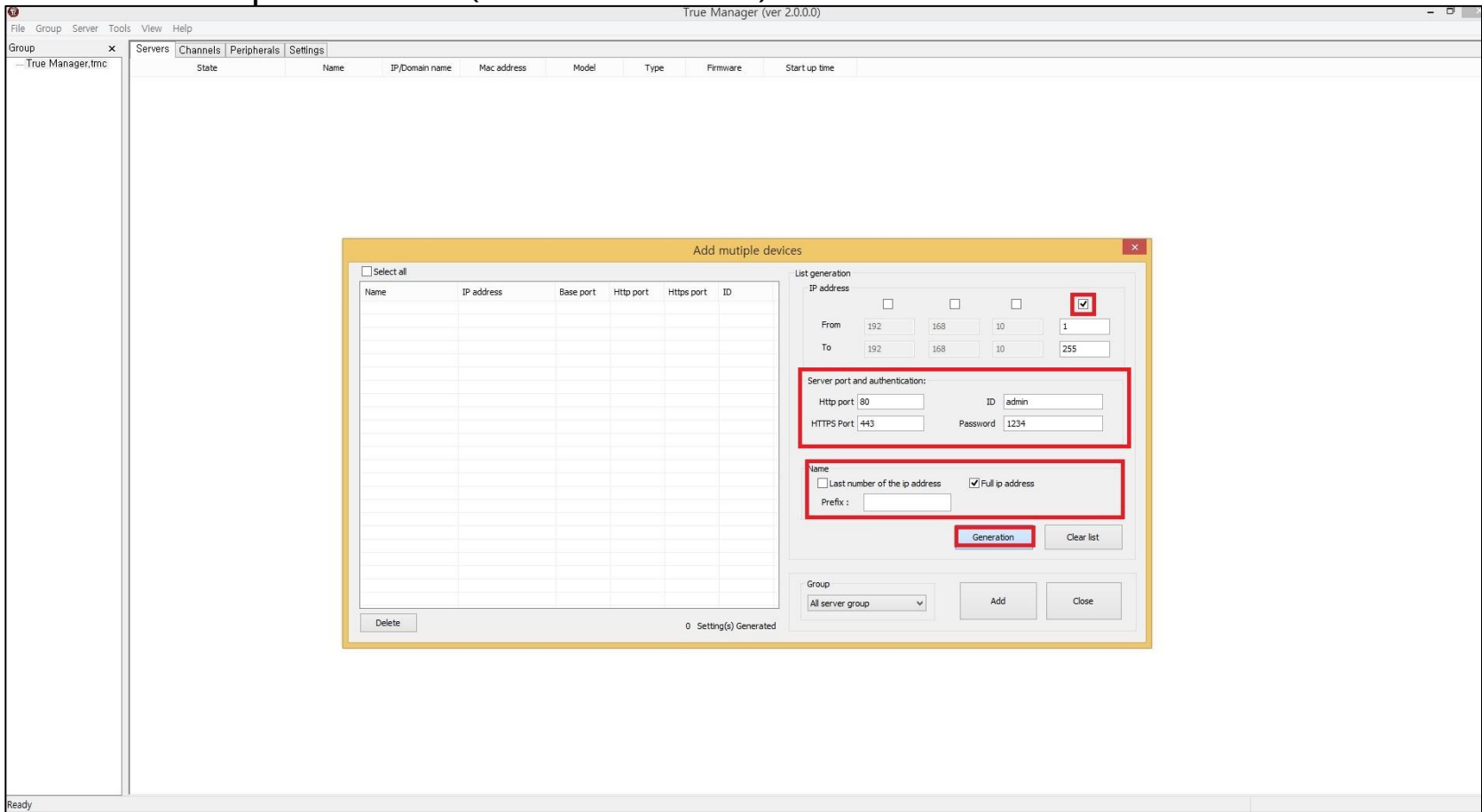
From에 192.168.10.1을 입력합니다.

5. Add Multiple Device (다수의 IP 등록)



5-3 위 사진과 같이 네번째 체크박스에 체크 후 To에 마지막 ip를 입력합니다.

5. Add Multiple Device (다수의 IP 등록)



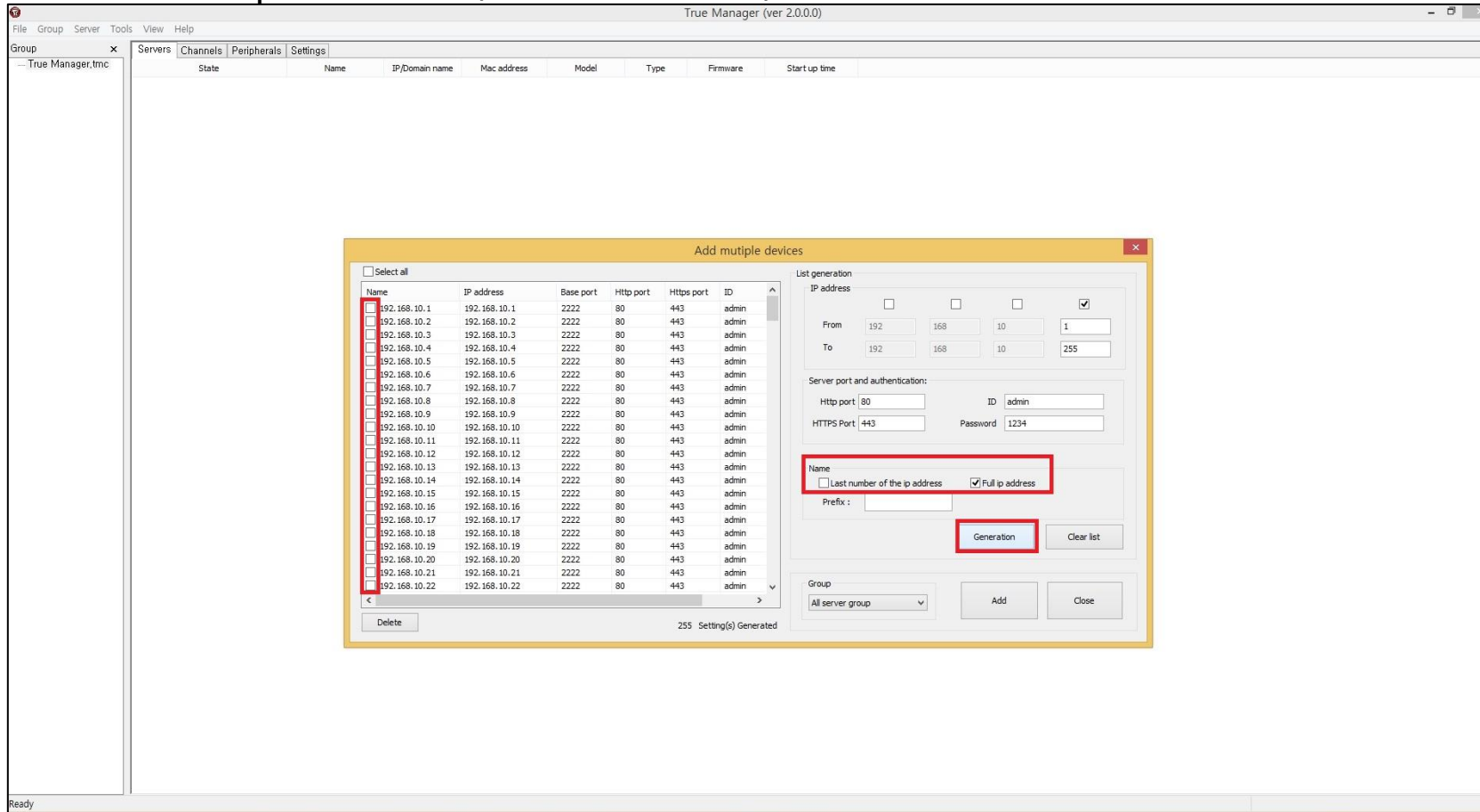
5-4. Sever Port and authentication 항목의 각 Port와 ID, Password를 입력합니다.

-Name에 두가지중 하나를 선택합니다.

-Last number of the ip address : IP 주소의 마지막 번호로 이름 등록

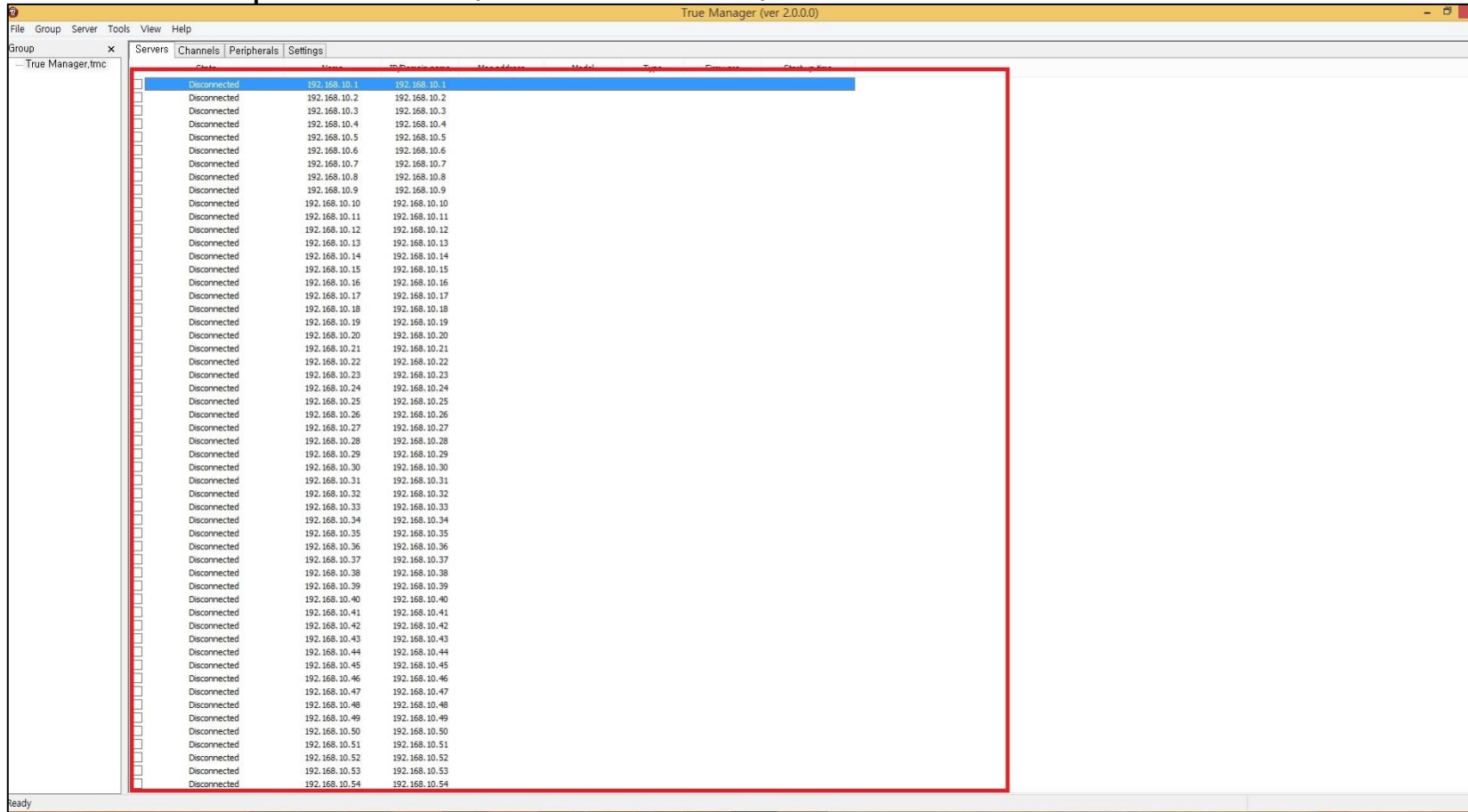
-Full ip address : IP 주소를 모두 이름으로 입력

5. Add Multiple Device (다수의 IP 등록)



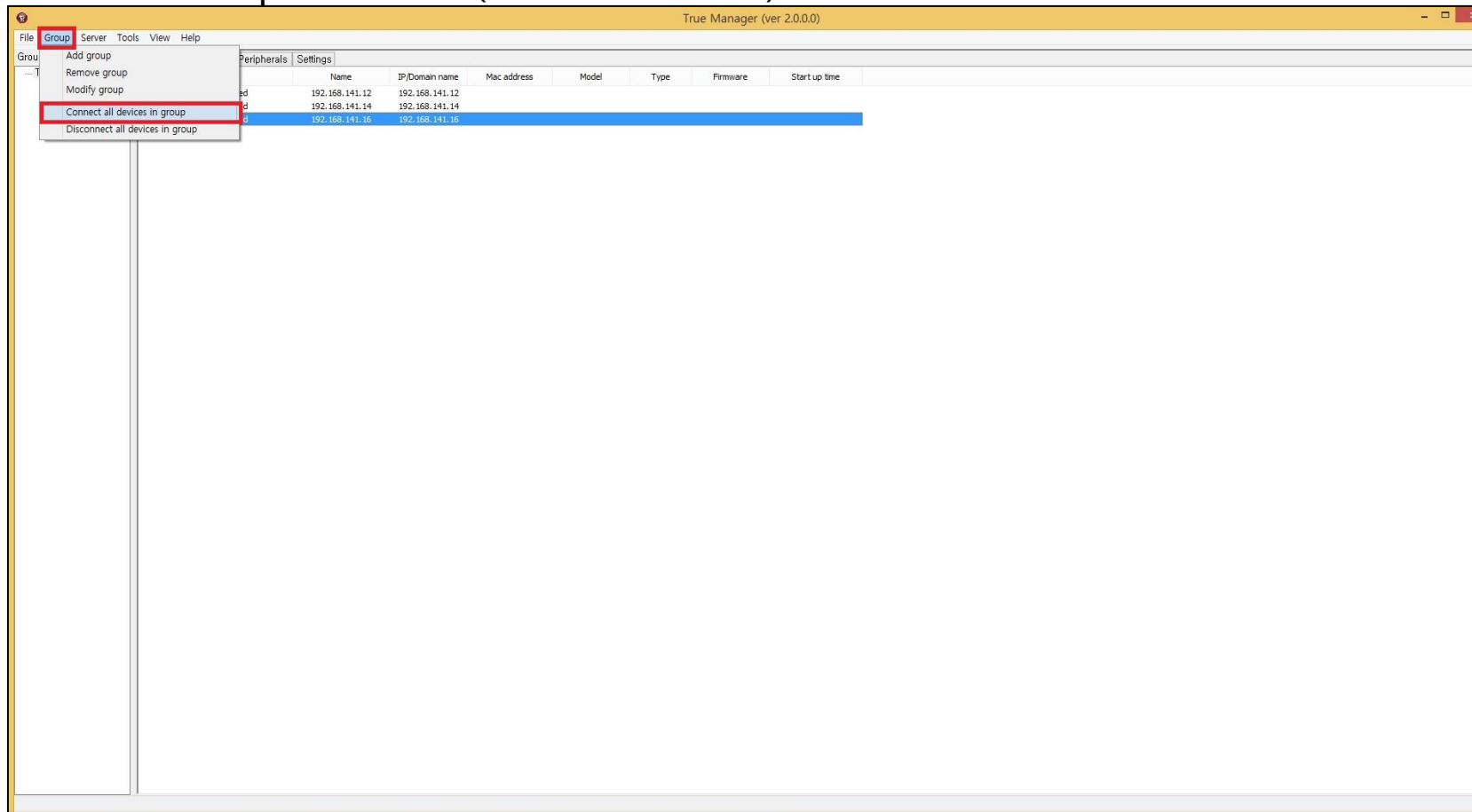
5-5. Generation을 누르면 왼쪽에 설정해준 IP List가 생성됩니다.
- 등록할 ip를 왼쪽의 체크박스에 체크합니다.

5. Add Multiple Device (다수의 IP 등록)



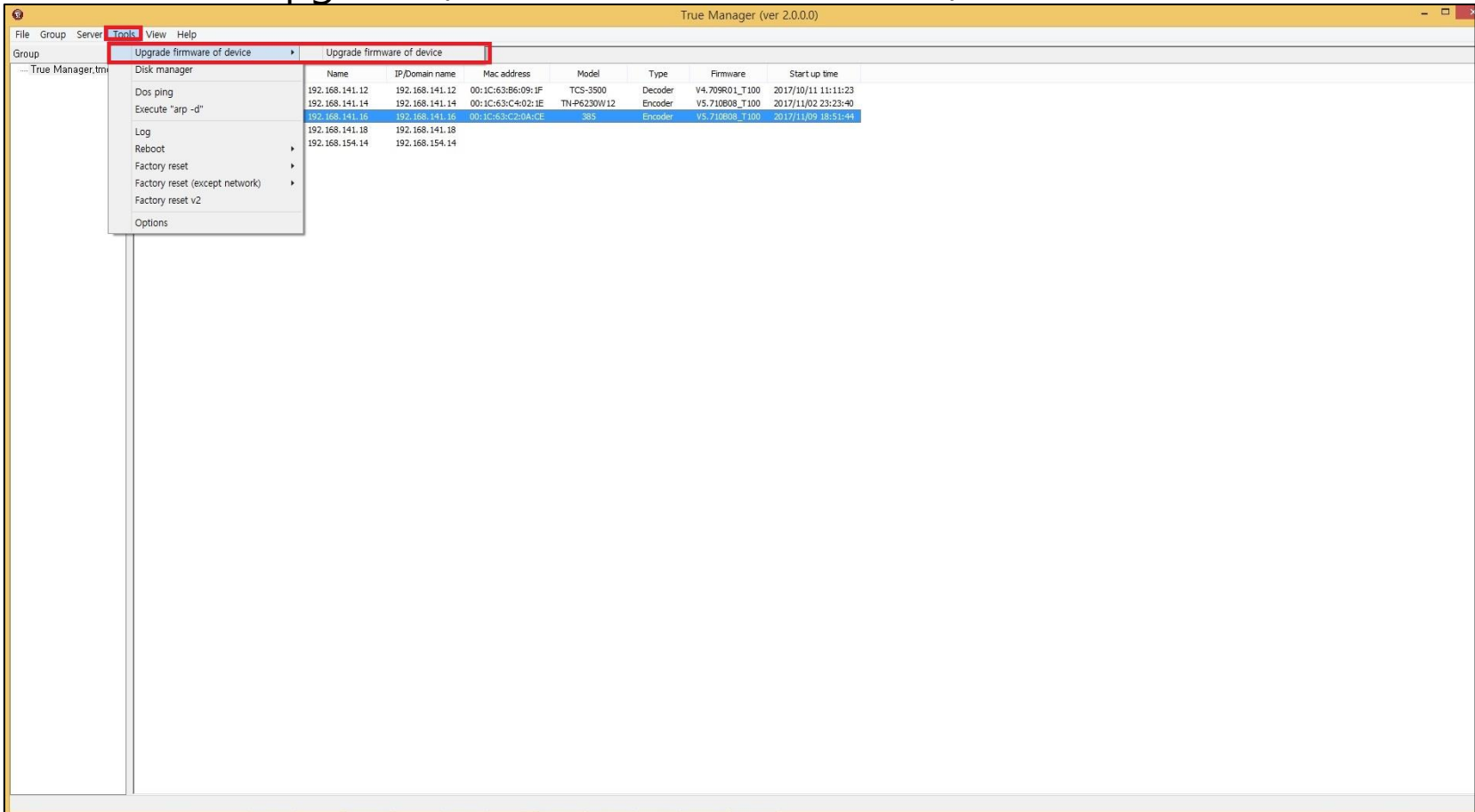
5-6. Add를 누르면 위 사진과 같이 등록됩니다.

5. Add Multiple Device (다수의 IP 등록)



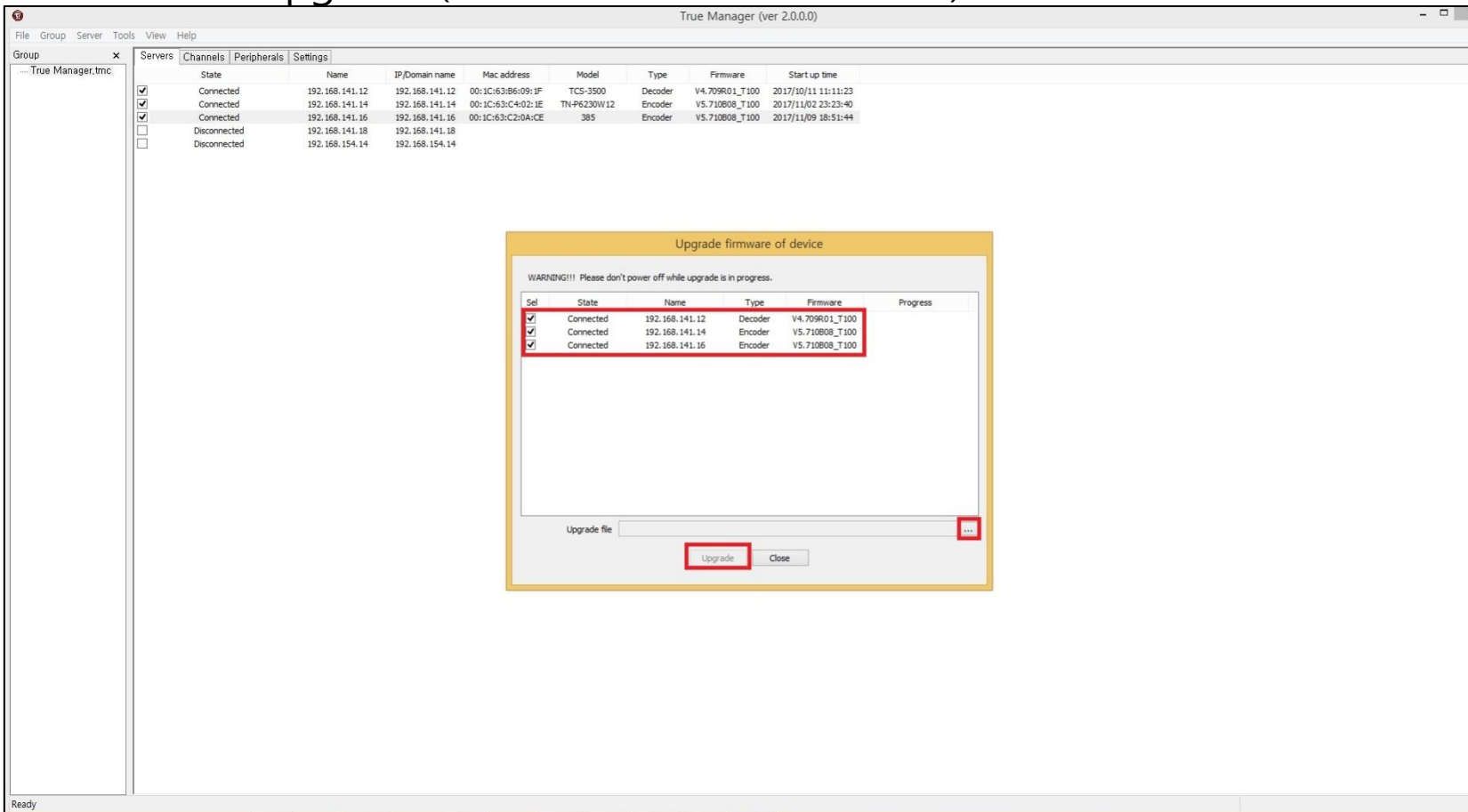
5-7. Group → Connect all devices in Group을 통해 모든 카메라를 연결합니다.

6. FirmWare Upgarde (카메라 펌웨어 업그레이드)



6-1. Tool ➡ Upgrade firmware of device를 누릅니다.

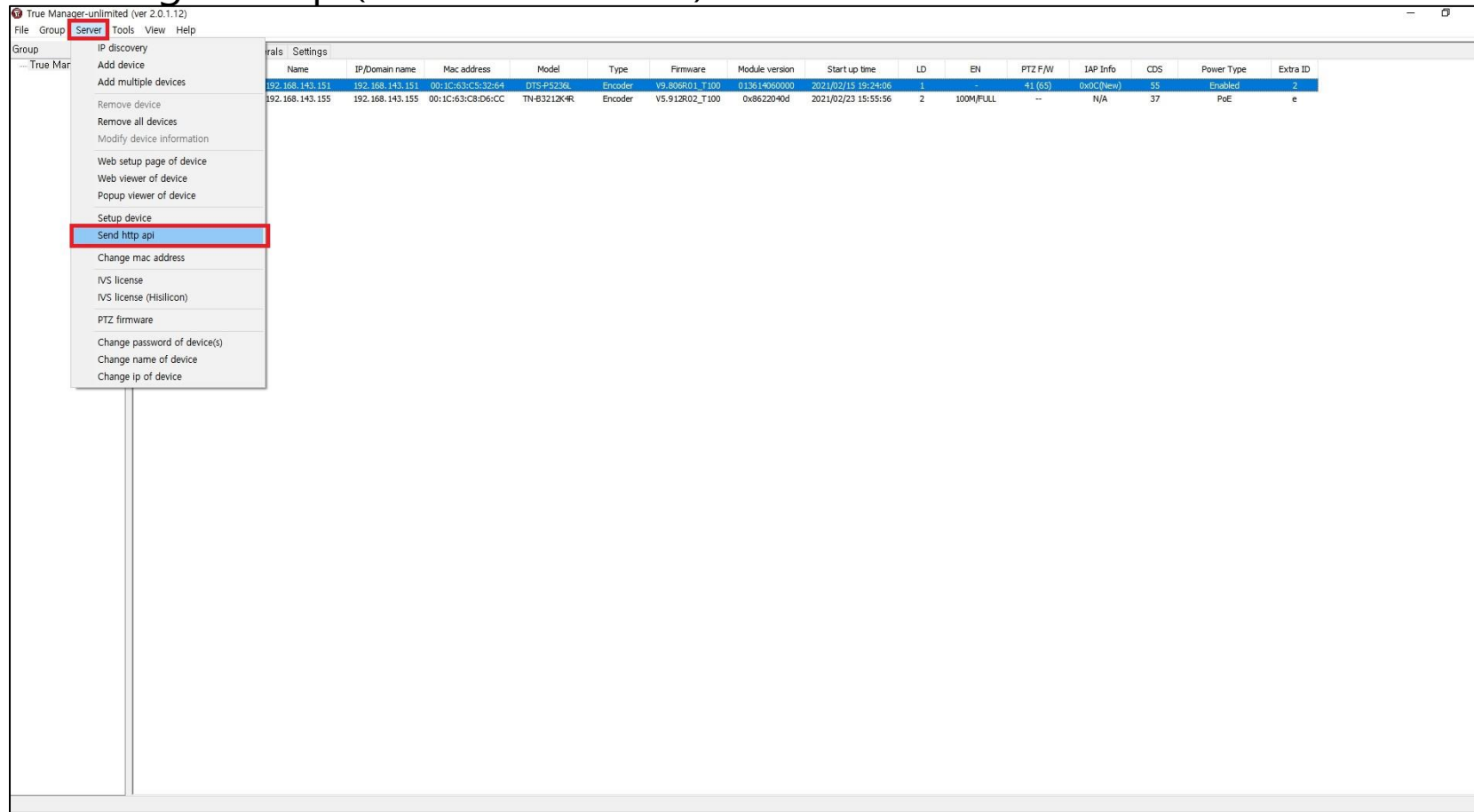
6. FirmWare Upgarde (카메라 펌웨어 업그레이드)



6-2. 펌웨어를 적용할 List 정보를 확인 후 하단의 ... 버튼을 눌러 펌웨어를 선택 후 Upgrade를 누릅니다.

- Upgrade 버튼을 누르면 Progress에 진행상황이 표시됩니다.
- Upgrade 후 Rebooting을 1회 진행하며 완료되면 Upgarde Success가 표시됩니다.

7. Config Backup (카메라 설정 백업)

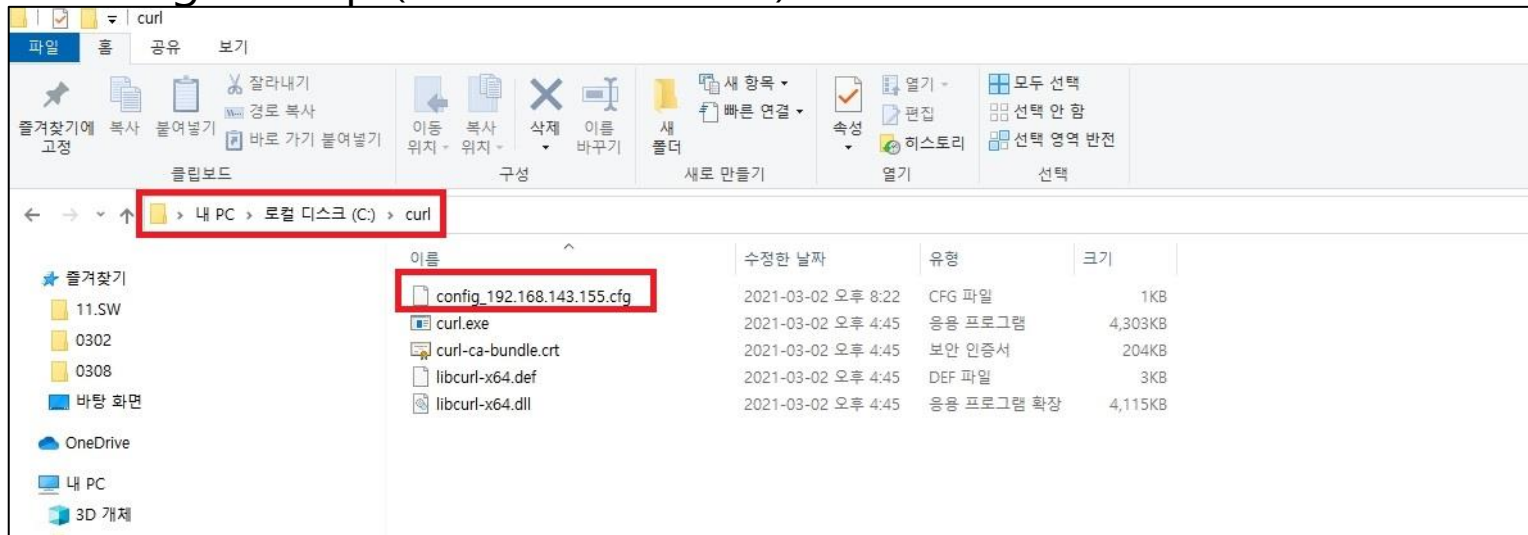


7-1. Server ➔ Send http api를 누릅니다.

[illegible]

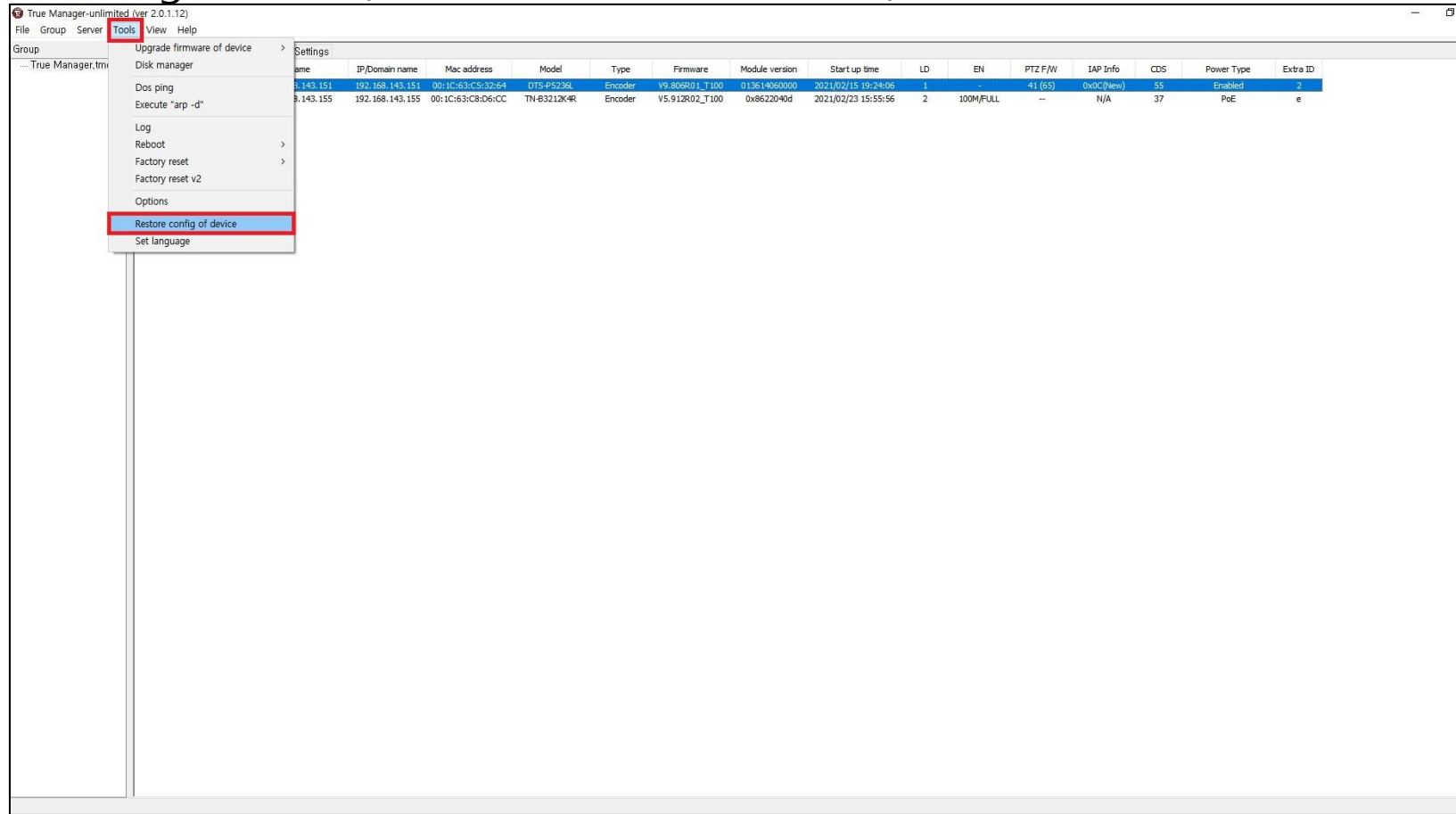
7-2. 좌측의 카메라 선택 ➡ 'Send' 버튼을 누르면 Backup이 시작됩니다.

7. Config Backup (카메라 설정 백업)



7-3. 내 컴퓨터 → 로컬디스크 C → Curl 폴더에서 백업된 파일 확인

8. Config Restore (설정된 백업 파일 불러오기)



8-1. Tool ➔ Restore Config of device

8. Config Restore (설정된 백업 파일 불러오기)

True Manager-unlimited (ver 2.0.1.12)

File Group Server Tools View Help

Group x

— True Manager.tmc

Servers Channels Peripherals Settings

	State	Name	IP/Domain name	Mac address	Model	Type	Firmware	Module version	Start up time	LD	EN	PTZ F/W	IAP Info	CDS	Power Type	Extra ID
<input checked="" type="checkbox"/>	Connected	192.168.143.151	192.168.143.151	00:1C:63:C5:32:64	DTS-P5236L	Encoder	V9.806R01_T100	013614060000	2021/02/15 19:24:06	1	-	41 (65)	0x0C(New)	55	Enabled	2
<input checked="" type="checkbox"/>	Connected	192.168.143.155	192.168.143.155	00:1C:63:C8:D6:CC	TN-B3212K4R	Encoder	V5.912R02_T100	0x8622040d	2021/02/23 15:55:56	2	100M/FULL	--	N/A	37	PoE	e

Restore Config

WARNING!!! Please use only the configuration file of the same model.

Sel	State	Name	Model	Firmware	State
<input checked="" type="checkbox"/>	Connected	192.168.143.151	DTS-P5236L	V9.806R01_T100	
<input checked="" type="checkbox"/>	Connected	192.168.143.155	TN-B3212K4R	V5.912R02_T100	

Config File

Restore Close

8-2. '...'을 눌러서 설정 파일 불러오기

8. Config Restore (설정된 백업 파일 불러오기)

True Manager-unlimited (ver 2.0.1.12)

File Group Server Tools View Help

Group: True Manager, Inc.

	Servers	Channels	Peripherals	Settings												
	State	Name	IP/Domain name	Mac address	Model	Type	Firmware	Module version	Start up time	LD	EN	PTZ F/W	IAP Info	CDS	Power Type	Extra ID
<input checked="" type="checkbox"/>	Connected	192.168.143.151	192.168.143.151	00:1C:63:C5:32:64	DTS-P5236L	Encoder	V9.806R01_T100	013614060000	2021/02/15 19:24:06	1	-	41 (65)	0x0C(New)	55	Enabled	2
<input checked="" type="checkbox"/>	Connected	192.168.143.155	192.168.143.155	00:1C:63:C8:D6:CC	TN-83212K4R	Encoder	V5.912R02_T100	0x8622040d	2021/02/23 15:55:56	2	100M/FULL	--	N/A	37	PoE	e

Restore Config

열기

찾는 위치(I): curl

이름: config_192.168.143.155.cfg

수정된 날짜: 2021-03-02 오후 8:22

유형: CFG 파일

열기(O)

파일 이름(N):

파일 형식(T): Config Files (*.cfg)

Restore Close

8-3. 'curl' 폴더 내 config_ip addressss.cfg 파일 선택 후 열기

8. Config Restore (설정된 백업 파일 불러오기)

True Manager-unlimited (ver 2.0.1.12)

File Group Server Tools View Help

Group x

True Manager,tmc

Servers Channels Peripherals Settings

	State	Name	IP/Domain name	Mac address	Model	Type	Firmware	Module version	Start up time	LD	EN	PTZ F/W	IAP Info	CDS	Power Type	Extra ID
<input checked="" type="checkbox"/>	Connected	192.168.143.151	192.168.143.151	00:1C:63:C5:32:64	DTS-P5236L	Encoder	V9.806R01_T100	013614060000	2021/02/15 19:24:06	1	-	41 (65)	0x0C(New)	55	Enabled	2
<input checked="" type="checkbox"/>	Connected	192.168.143.155	192.168.143.155	00:1C:63:C8:D6:CC	TN-B3212K4R	Encoder	V5.912R02_T100	0x8622040d	2021/02/23 15:55:56	2	100M/FULL	--	N/A	37	PoE	e

Restore Config

WARNING!!! Please use only the configuration file of the same model.

Sel	State	Name	Model	Firmware	State
<input checked="" type="checkbox"/>	Connected	192.168.143.151	DTS-P5236L	V9.806R01_T100	
<input checked="" type="checkbox"/>	Connected	192.168.143.155	TN-B3212K4R	V5.912R02_T100	

Config File C:\WcurIW\config_192.168.143.155.cfg ...

Restore Close

8-4. 'Restore' 버튼 클릭